

Dedicated to Quality....

....Committed to Support

Sullivan
Palatek®

Designed for driving spikes in new or green ties

- 4 bolt backhead
- Heavy duty side rod bolts and springs
- Forged alloy construction
- Forged alloy striking dolly
- Internal oiler with grease fitting for dolly lubrication
- Optional muffler
- One year warranty
- Manufactured in USA



Specifications		
Net weight	89.5 lbs	40.5 kg
Length	26.5 in	673 mm
Bore	2.625 in	66.67 mm
Stoke	6.0625 in	154 mm
Blows per minute	1250	1250
Air inlet (NPT)	3/4 in	19 mm
Air consumption*	75 cfm	2.1 m ³ /m
*estimated		

FOR OPTIMUM PERFORMANCE, DO NOT OPERATE TOOL ABOVE 90 PSI (6 BAR) WORKING PRESSURE.

WARNING:

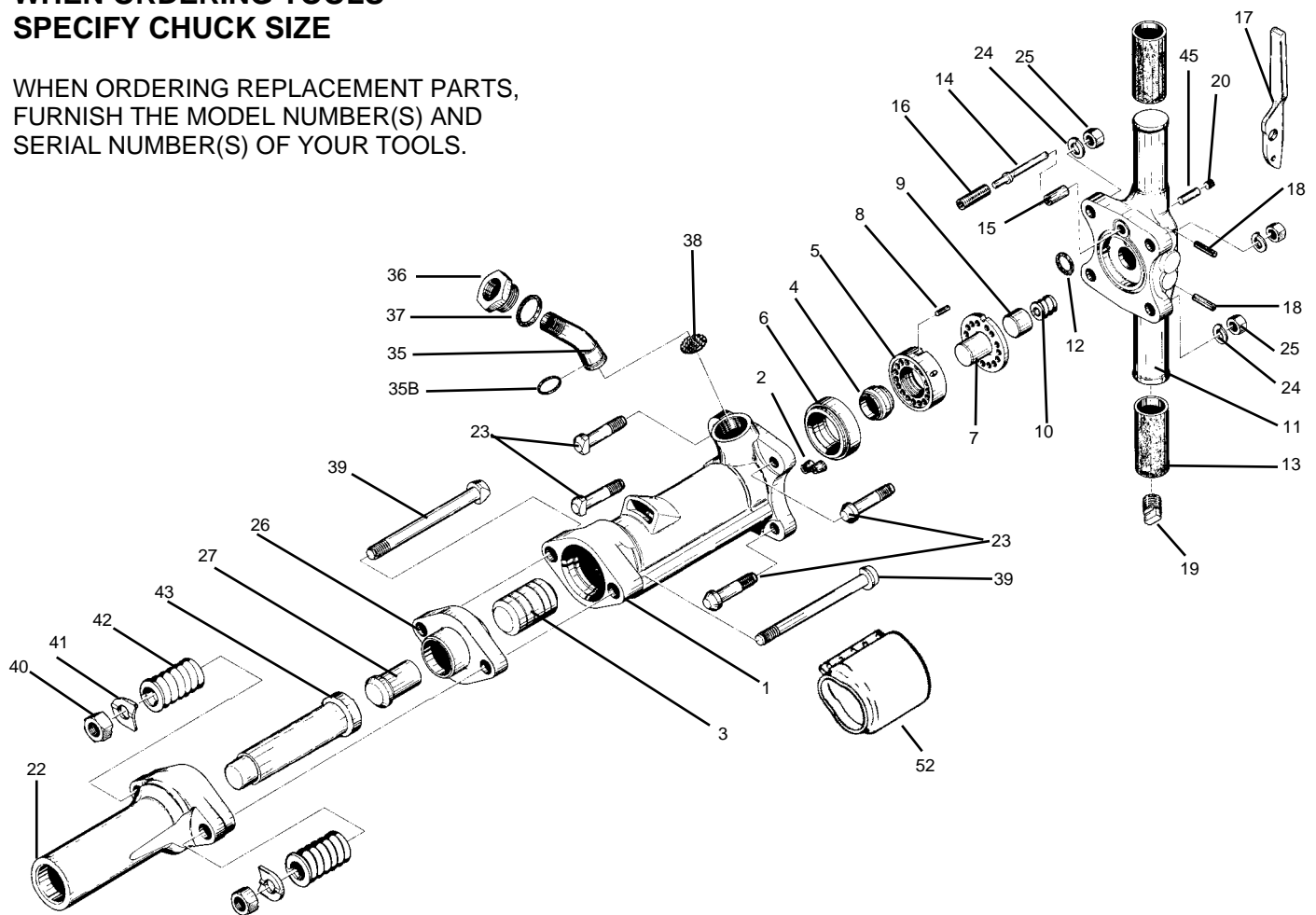
ALWAYS DISCONNECT THE AIR SUPPLY BEFORE CHANGING CHISELS OR DISMANTLING THE TOOL FOR SERVICE OR REPAIR. FOR MAXIMUM SAFETY WE ADVISE THE INSTALLATION OF A SHUT-OFF VALVE AT THE END OF THE AIR LINE.

DO NOT EXCEED 100 PSI (7BAR) WORKING PRESSURE.

PARTS LIST SPIKE DRIVER 90 lb class SSD-90

WHEN ORDERING TOOLS SPECIFY CHUCK SIZE

WHEN ORDERING REPLACEMENT PARTS,
FURNISH THE MODEL NUMBER(S) AND
SERIAL NUMBER(S) OF YOUR TOOLS.



INDEX	PART	DESCRIPTION	INDEX	PART	DESCRIPTION
1	SI6001	CYLINDER	19	SI6019	OIL RESERVOIR PLUG
2	SI6602	CYLINDER PLUGS (2)	20	SI6620	OIL CONTROL FELT PLUG
3	SI6003	PISTON	22	SI6022	FRONTHEAD - SPIKE DRIVER
4	SI6604	AUTOMATIC VALVE	23	SI6023	BACKHEAD BOLT (4)
5	SI6005	VALVE CHEST	24	SI6624	BACKHEAD BOLT LOCKWASHER (4)
6	SI6006	VALVE SEAT	25	SI6625	BACKHEAD BOLT NUT (4)
7	SI6007	VALVE GUIDE	26	SI6026	TAPPET SEAT
8	SI6608	VALVE DOWEL PIN	27	SI6027	TAPPET
9	SI6609	BACKHEAD PLUNGER	35	SI6035	AIR INLET SWIVEL
10	SI6610	BACKHEAD PLUNGER SPRING	35B	SI6035B	AIR INLET SWIVEL O-RING
11	SI6011	BACKHEAD BARE (incl.#6615)	36	SI6036	AIR INLET SWIVEL NUT
NS	SI6011C	BACKHEAD ASSBLY. COMPLETE	37	SI6037	SWIVEL NUT O-RING
12	SI6012	BACKHEAD O-RING	38	SI6038	AIR INLET SCREEN
NS	SI6612	BACKHEAD VALVE PORT O-RING	39	SI6039	FRONTHEAD BOLT (2)
13	SI6613	RUBBER GRIP (2)	40	SI6640	FRONTHEAD BOLT NUT(2)
14	SI6614	THROTTLE VALVE	41	SI6641	FRONTHEAD BOLT LOCKWASHER (2)
14B	SI6614B	THROTTLE VALVE O-RING	42	SI6642	FRONTHEAD BOLT SPRING(2)
15	SI6615	THROTTLE VALVE SLEEVE	43	SI6643	SPIKE DRIVER DOLLY
16	SI6616	THROTTLE VALVE SPRING	45	SI6645	OIL CONTROL FELT
17	SI6617	THROTTLE LEVER	NS	SI6050	OIL TANK PLUG
NS	SI6617S	SAFETY LEVER COMPLETE (OPT.)	52	SI6052	MUFFLER
18	SI6618	THROTTLE LEVER PIN (2)			ASSBLY.(OPTIONAL)