

# Sullivan Palatek®

*Dedicated to Quality....*

*....Committed to Support*

DEMOLITION TOOL



Designed for light concrete demolition, all angles or confined spaces. D handle with external thumb trigger

- Rotatable exhaust muffler
- One piece machined premium alloy cylinder
- Safe bridged or stepped internal cylinder (piston will not exit bottom of tool)
- Utilizes 11X jumbo steels
- Spring retainer
- Standard upper and lower hardened sleeves
- Urethane bumper for longer life
- Requires whip hose and oiler
- One year warranty
- Manufactured in USA

Specifications		
Net weight	23 lbs	10.5 kg
Length	17 in	432 mm
Bore	1.418 in	36 mm
Stroke	2.75 in	70 mm
Blows per minute	1560	1560
Chuck size	11 x JUMBO	
Air inlet (NPT)	3/4 in male	19 mm
	7/8 in female	22.2 mm
Air consumption*	40 cfm	1.2 m <sup>3</sup> /m
*estimated		

**FOR OPTIMUM PERFORMANCE, DO NOT OPERATE TOOL ABOVE 90 PSI (6 BAR) WORKING PRESSURE.**

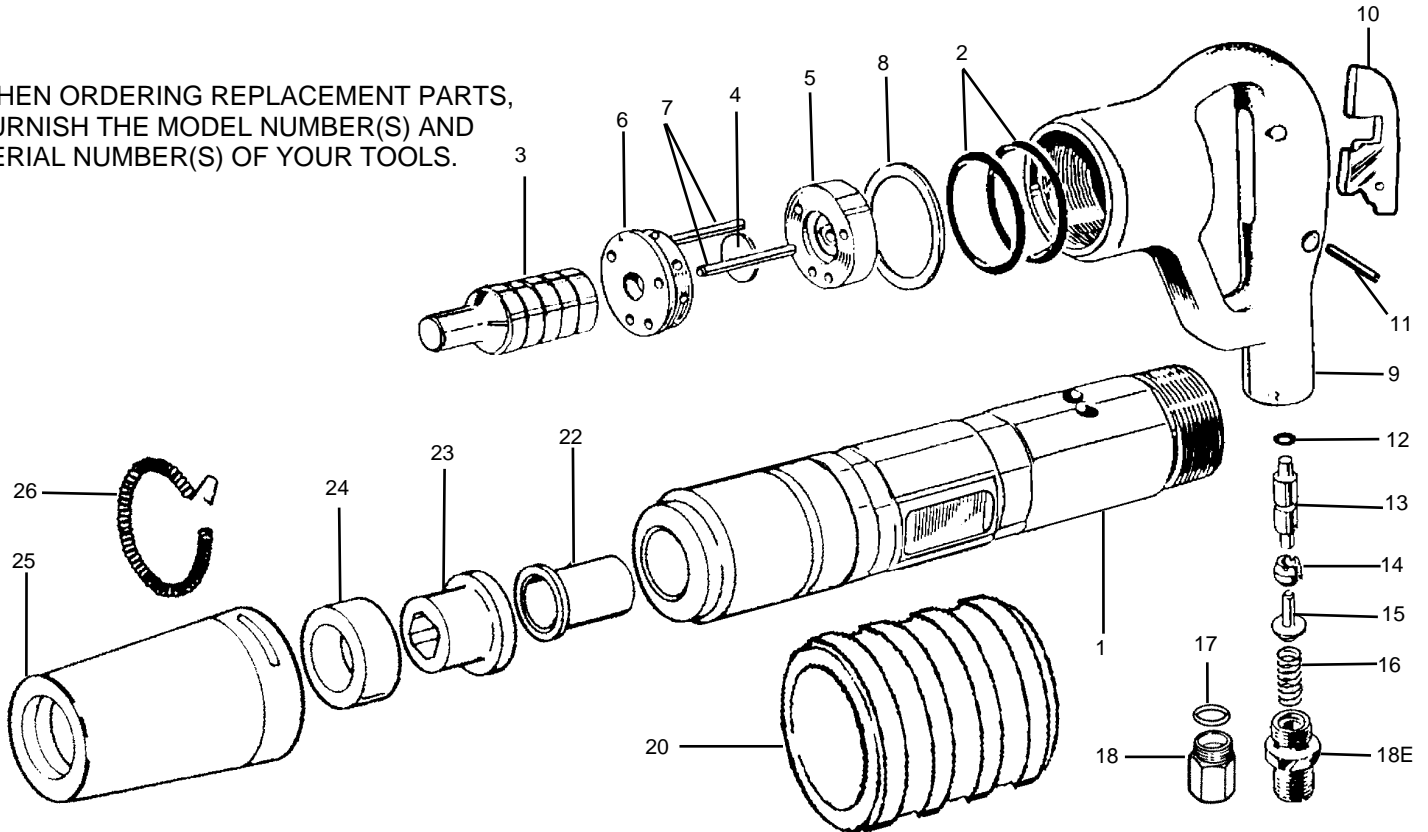
**WARNING:**

**ALWAYS DISCONNECT THE AIR SUPPLY BEFORE CHANGING CHISELS OR DISMANTLING THE TOOL FOR SERVICE OR REPAIR. FOR MAXIMUM SAFETY WE ADVISE THE INSTALLATION OF A SHUT-OFF VALVE AT THE END OF THE AIR LINE.**

**DO NOT EXCEED 100 PSI (7BAR) WORKING PRESSURE.**

# PARTS LIST RIVET BUSTER 20 lb. class SRB-6

WHEN ORDERING REPLACEMENT PARTS, FURNISH THE MODEL NUMBER(S) AND SERIAL NUMBER(S) OF YOUR TOOLS.



INDEX	PART	DESCRIPTION	INDEX	PART	DESCRIPTION
1	SI6549	CYLINDER (RIVET BUSTER TYPE)	20	SI6520	MUFFLER
2	SI6552	CYLINDER "O" RING (2)	22	SI6682	UPPER SLEEVE BUSHING
3	SI6553	PISTON	23	SI6083	LOWER SLEEVE BUSHING
4	SI6554	VALVE DISC	24	SI6084	RETAINER BUMPER (URETHANE)
5	SI6555	VALVE PLATE UPPER	25	SI6085	RETAINER
6	SI6556	VALVE PLATE LOWER	26	SI6686	RETAINER SPRING
7	SI6557	DOWEL PIN (2)	NS	SI6135	SWIVEL
8	SI6558	PACKING RING (2)			
9	SI6559	HANDLE BARE			
NS	SI6559-C	HANDLE COMPLETE			
10	SI6560	THROTTLE LEVER			
11	SI6561	THROTTLE LEVER PIN			
12	SI6562	PUSH ROD "O" RING			
13	SI6563	PUSH ROD			
14	SI6564	THROTTLE VALVE (SUB 6172)			
15	SI6565	THROTTLE VALVE STEM			
16	SI6566	THROTTLE VALVE SPRING			
17	SI6567	AIR INLET "O" RING			
18	SI6568	AIR INLET			

Note: When re-assembling this tool following cleaning or any service/repair, it is necessary to replace the two packing rings (PN: SI6558, INDEX # 8) inside the handle. This helps lock the handle in the tightened position. A small amount of a thread locking compound may be applied during re-assembly to help prevent the handle from vibrating loose during operation.