



*Dedicated to Quality....
....Committed to Support*

Designed for light demolition jobs, digging clay and hardpan, and can be used horizontally with D handle and external thumb trigger.

- Exhaust muffler
- One piece machined cylinder
- Removable front head with latch
- Replaceable chuck bushing, 7/8 in x 3 1/4 in
- One year warranty
- Manufactured in USA



Specifications		
Net Weight	19 lbs	9 kg
Length	18.5 in	470 mm
Bore	1.418 in	36 mm
Stroke	2.75 in	70 mm
Blows per minute	1560	1560
Chuck size	7/8 x 3 1/4 in Hex	22 x 83 mm Hex
Air inlet (NPT)	3/4 in male	19 mm
	7/8 in female	22.2 mm
Air consumption*	40 cfm	1.2 m ³ / m
*estimated		

FOR OPTIMUM PERFORMANCE, **DO NOT** OPERATE TOOL ABOVE 90 PSI (6 BAR) WORKING PRESSURE.

WARNING:
ALWAYS DISCONNECT THE AIR SUPPLY BEFORE CHANGING CHISELS OR DISMANTLING THE TOOL FOR SERVICE OR REPAIR. FOR MAXIMUM SAFETY WE ADVISE THE INSTALLATION OF A SHUT-OFF VALVE AT THE END OF THE AIR LINE.

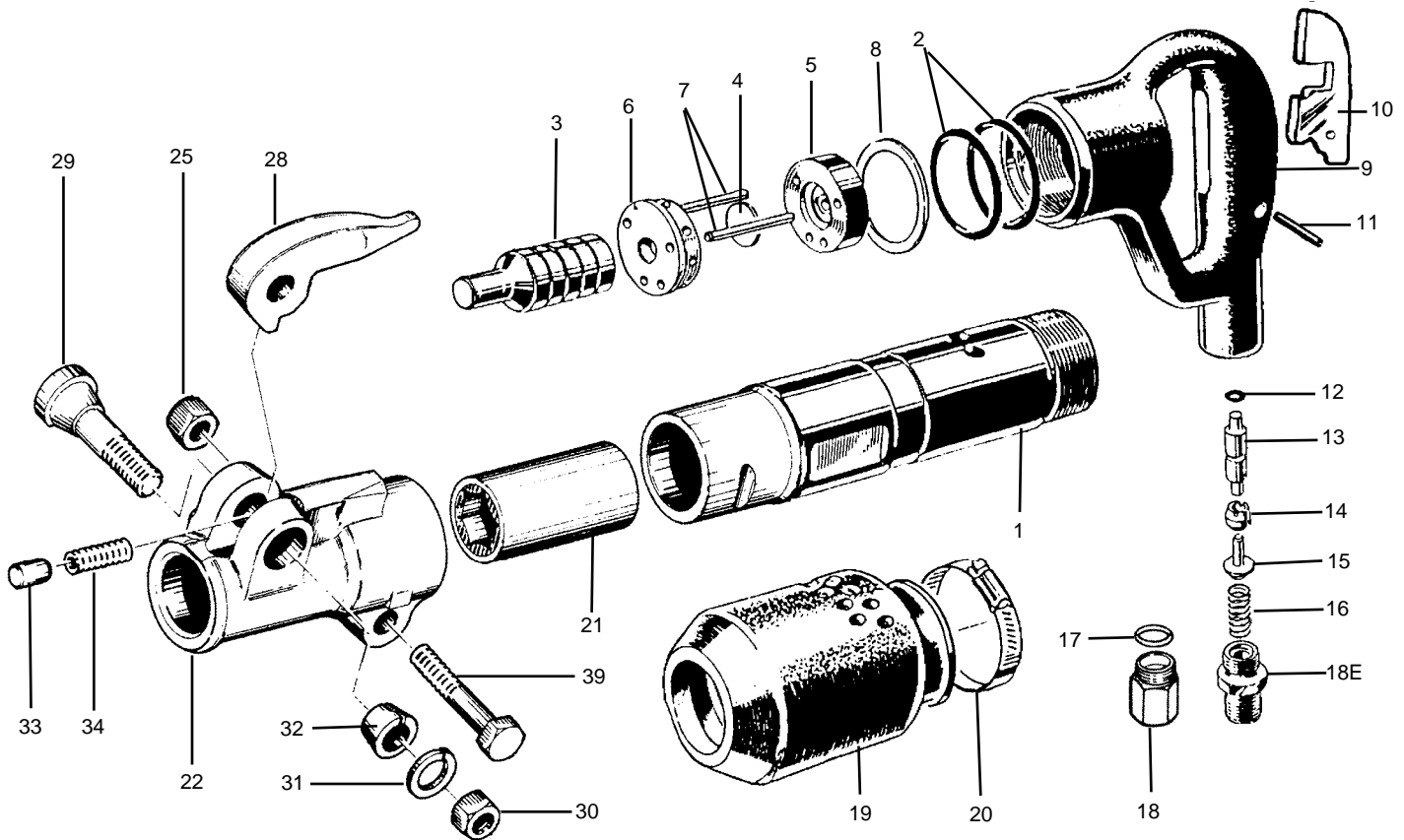
DO NOT EXCEED 100 PSI (7BAR) WORKING PRESSURE.



PARTS LIST CLAY DIGGER

20 lb. class

SCD-20



INDEX	PART	DESCRIPTION	INDEX	PART	DESCRIPTION
1	SI6550	CYLINDER (LATCH TYPE RET.)	20	SI6570	MUFFLER CLAMP
2	SI6552	CYLINDER "O" RING (2)	21	SI6571H	CHUCK BUSHING 7/8" x 3 1/4" HEX
3	SI6553	PISTON	NS	SI6571R	CHUCK BUSHING 25mm ROUND
4	SI6554	VALVE DISC	22	SI6321	FRONTHEAD BARE
5	SI6555	VALVE PLATE UPPER	25	SI6325	FRONTHEAD BOLT NUT
6	SI6556	VALVE PLATE LOWER	28	SI6328	LATCH RETAINER (FORGED)
7	SI6557	DOWEL PIN (2)	29	SI6329	RETAINER BOLT
8	SI6558	PACKING RING (2)	30	SI6330	RETAINER BOLT NUT
9	SI6559	HANDLE BARE	31	SI6331	RETAINER BOLT LOCK WASHER
10	SI6560	THROTTLE LEVER	32	SI6332	RETAINER BOLT BUSHING
11	SI6561	THROTTLE LEVER PIN	33	SI6333	RETAINER PLUNGER
12	SI6562	PUSH ROD "O" RING	34	SI6334	RETAINER PLUNGER SPRING
13	SI6563	PUSH ROD	39	SI6339	FRONTHEAD BOLT
14	SI6564	THROTTLE VALVE (SUB SI6172)			ASSEMBLIES
15	SI6565	THROTTLE VALVE STEM	SI6550-H		CYLINDER WITH 7/8" x 3 1/4" BUSHING
16	SI6566	THROTTLE VALVE SPRING	SI6550-R		CYLINDER WITH 25mm RND BUSHING
17	SI6567	AIR INLET "O" RING	SI6559-C		HANDLE COMPLETE
18	SI6568	AIR INLET	SI6569-C		MUFFLER WITH CLAMP
18E	SI6568E	AIR INLET (MALE PIPE THREAD)	SI6321-C		FRONTHEAD COMPLETE
19	SI6569	EXHAUST MUFFLER CAP			

WHEN ORDERING TOOLS SPECIFY CHUCK SIZE

WHEN ORDERING REPLACEMENT PARTS,
FURNISH THE MODEL NUMBER(S) AND
SERIAL NUMBER(S) OF YOUR TOOLS.

Sullivan
Palatek