

# BACK FILL TAMPER 40 lb class SBT-6

*Dedicated to Quality....*

*....Committed to Support*

# Sullivan Palatek®

**Designed to compact dirt in ditches, holes around utility poles, and tight spaces. Comes standard with 6" cast iron butt.**

- Precision ground alloy cylinders
- Internal oiler
- Side handle throttle
- Adjustable packing gland
- Optional butts:
  - Pole of half moon butt
  - 6" aluminum butt
- Requires whip hose (oiler optional)
- One year warranty
- Manufactured in USA



Specifications		
Net Weight	40 lbs	18 kg
Length	48.25 in	1226 mm
Bore	1.5 in	38 mm
Stroke	5.5 in	140mm
Blows per minute	800	800
Taper (Morse)	.804 in	20.42 mm
Air Inlet (NPT)	1/2 in	13 mm
Air consumption*	38.5 cfm	1.1 m <sup>3</sup> / m
*estimated		

**FOR OPTIMUM PERFORMANCE, DO NOT OPERATE TOOL ABOVE 90 PSI (6 BAR) WORKING PRESSURE.**

**WARNING:**

**ALWAYS DISCONNECT THE AIR SUPPLY BEFORE CHANGING CHISELS OR DISMANTLING THE TOOL FOR SERVICE OR REPAIR. FOR MAXIMUM SAFETY WE ADVISE THE INSTALLATION OF A SHUT-OFF VALVE AT THE END OF THE AIR LINE.**

**DO NOT EXCEED 100 PSI (7BAR) WORKING PRESSURE.**

# Sullivan Palatek®

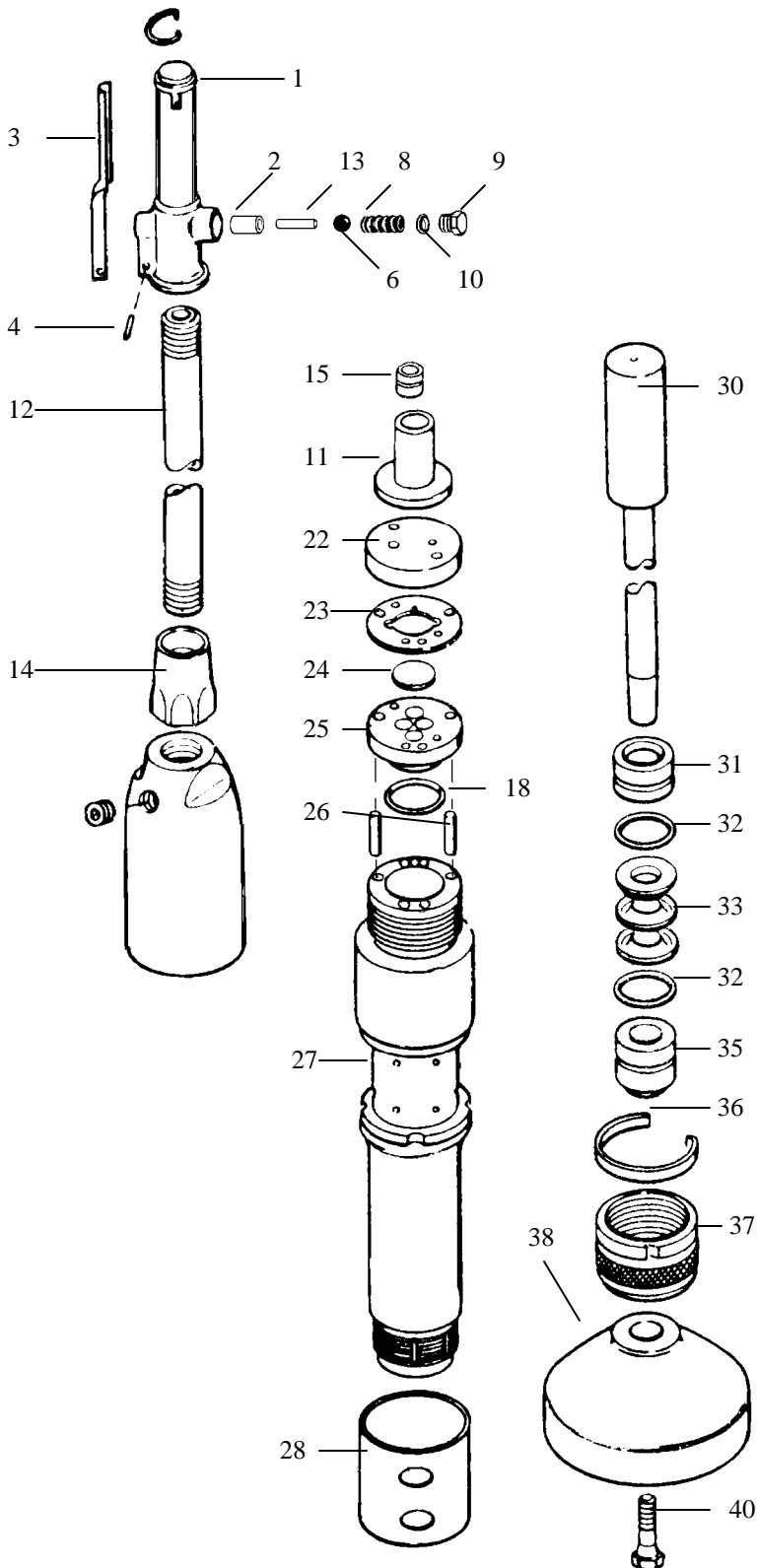
1201 West US Highway 20  
Michigan City, IN 46360

Ph: 800-438-6203  
Fx: 800-725-6203

info@sullivanind.com  
www.sullivanpalatek.com

## PARTS LIST

WHEN ORDERING REPLACEMENT PARTS,  
FURNISH THE MODEL NUMBER(S) AND  
SERIAL NUMBER(S) OF YOUR TOOLS.



INDEX	PART	DESCRIPTION
NS	SI6500-N	THROT. BODY COMPLETE
1	SI6501N	THROT. BODY BARE
2	SI6502-N	PUSH PIN BUSHING
3	SI6503	THROTTLE LEVER
4	SI6504	THROTTLE LEVER FULCRUM PIN
5	SI6505	THROTTLE LEVER LOCK CLIP
6	SI6133	THROTTLE BALL (new style)
8	SI6139	THROT. BALL SPRING (new style)
9	SI6509-A	THROTTLE VALVE PLUG(new style)
10	SI6510	THROTTLE VALVE PLUG O-RING
11	SI6511	OIL RESERVOIR END CAP
12	SI6512	CONNECTING PIPE
13	SI6108L	PUSH PIN
14	SI6514	CONNECTING PIPE NUT
15	SI6515	OIL CONTROL BUSHING
16	SI6516	BACKHEAD
NS	SI6516C	BACKHEAD ASSBLY.(index 11,15-17)
17	SI6517	OIL PLUG
18	SI6518	LOWER VALVE BLOCK O-RING
22	SI6522	UPPER VALVE BLOCK
23	SI6523	CENTER PLATE
24	SI6524	VALVE DISC
25	SI6525	LOWER VALVE BLOCK
26	SI6526	VALVE DOWEL PIN (2)
27	SI6527	BARREL
NS	SI6528	REXHAUST DEFLECTOR(RUBBER)
28	SI6528	EXHAUST DEFLECTOR(STEEL)
30	SI6530	PLUNGER
31	SI6531	UPPER GUIDE BUSHING
32	SI6532	GUIDE BUSHING O-RING (2)
33	SI6533	PLUNGER PACKING SET
35	SI6535	LOWER GUIDE BUSHING
36	SI6536	PACKING NUT LOCK CLIP
37	SI6537	PACKING NUT
38	SI6538	6" MALLEABLE IRON BUTT
NS	SI6539	6" POWER POLE BUTT
40	SI6540	CLAMP SCREW