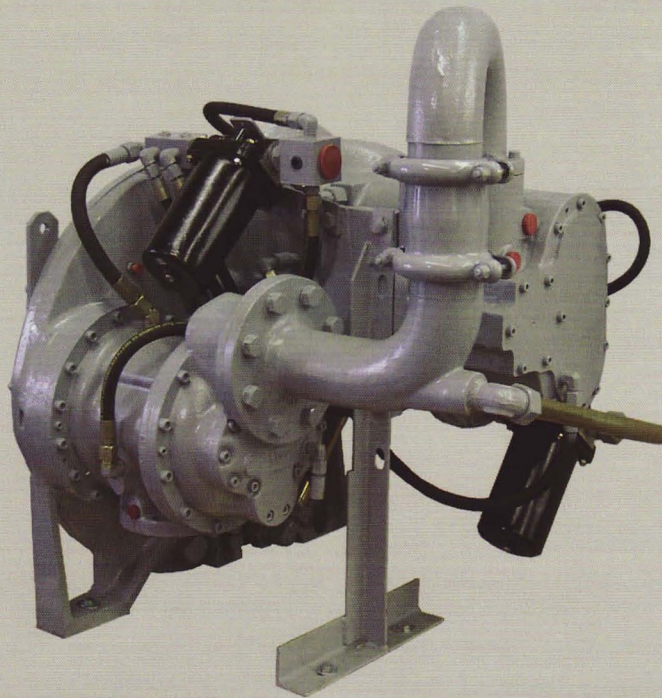


Sullivan --- Palatek®

Two stage High Pressure Airends

“The Ultimate Performance Rotary Screw Air Compressor”

Sullivan-Palatek heavy duty Compressor Airends offer
750-1150 CFM @ 350 PSI



ENGINEERING FEATURES

The main construction features of 20-12 airend are:

- Simple installation
- Rugged construction
- Low operating noise
- Simple to assemble and disassemble
- Oil filter for each airend
- Two rotors with asymmetrical profile

HIGH EFFICIENCY ROTORS

The compression stages employ a rotor design which is acknowledged to be the most efficient in the industry. The asymmetrical rotor profile provides the lowest power consumption per cubic foot of compressed air.

Airend Warranty, 2 years. Extended 5-Year Superior Platinum Warranty with purchase of genuine Sullivan-Palatek parts and fluids

Proven performance with exceptional design

Sullivan Palatek

STANDARD FEATURES

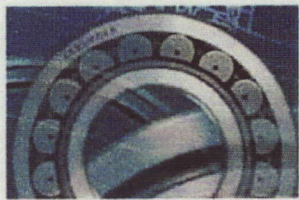
HOUSING

Two Stage Compressor unit (Airend) housings are made of high grade grey cast iron and are dimensionally stable, thick walled and machined to close tolerances. The close tolerance of rotors and housing assembly ensures optimum pressure ratio for high efficiency.

Suction and discharge ports are designed to provide wider performance over a wide range of tip speed of rotors.

MECHANICAL SEALS

Mechanical seals were designed with a carbon rotating part, fixed to shaft with a buna-n or viton bellow. The stationary seat in the housing can be steel / ceramic. These are relatively expensive seals because they will withstand the full system pressure during compression shutdown.

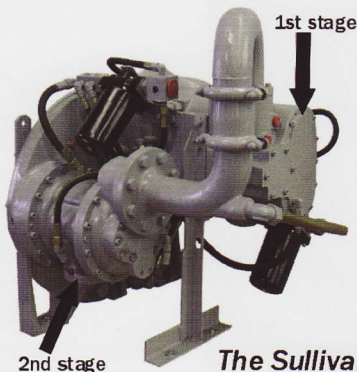


BEARINGS

The Compressor unit (Airend) is equipped with anti-friction thrust and radial for higher load carrying capacity and smooth operation.

GEARS & DRIVE SYSTEM

The drive system contains precision machined helical gears made of high grade steel, which reduce noise and improve fatigue strength, thus enhancing reliability. The Airend is energized by a prime mover which is directly coupled with the input drive shaft through a flexible coupling and the drive is given to the male rotor. The speed of rotors is increased by means of the helical gears to obtain the required output parameters in terms of free air delivery at specified pressures.



MULTI STAGING

Multi staging is employed for higher overall efficiency, high pressures and less noise. The thrust balancing piston arrangement incorporated in the multi staging models minimizes thrust loading thus increasing the bearing life.

The Sullivan-Palatek Compressor unit (Airend) assembly is designed and constructed to exacting standards of quality. These Standards result in assemblies with long operating life, minimum maintenance and low operating costs.

**Sullivan
Palatek**

Michigan City, IN

TEL: 219-874-2497

TEL: 800-438-6203

FAX: 219-872-5043

FAX: 800-725-6203

www.sullivanpalatek.com

info@palatek.com

R 2STAGE 05/08 1M